



---

**COLORADO**  
Department of Education

---

# Family-School-Community Partnerships: From Paper to Practice

Colorado Association of School Boards

December 8, 2023



State Advisory Council for Parent Involvement in Education



## Participants will:

- Learn the benefits of family-school-community partnering.
- Discuss Colorado legislation that support partnering.
- Share promising practices and challenges about partnering.
- Identify statewide resources to help support partnering.

December 8,  
2024

Your local paper is  
doing a feature  
story about family  
engagement in  
your district.  
What is the  
headline?



# What is Family-School-Community Partnering?

**Inclusive**

**Linked to Learning**

**Intentional**

**Proactive vs  
Reactive**

**Integrate and  
Elevate**

**Sustainable**

**Ask me about**

**FSCP!**

**Realistically  
Optimistic**

**Committed**

**School  
Improvement  
Strategy**

**Research-Based**

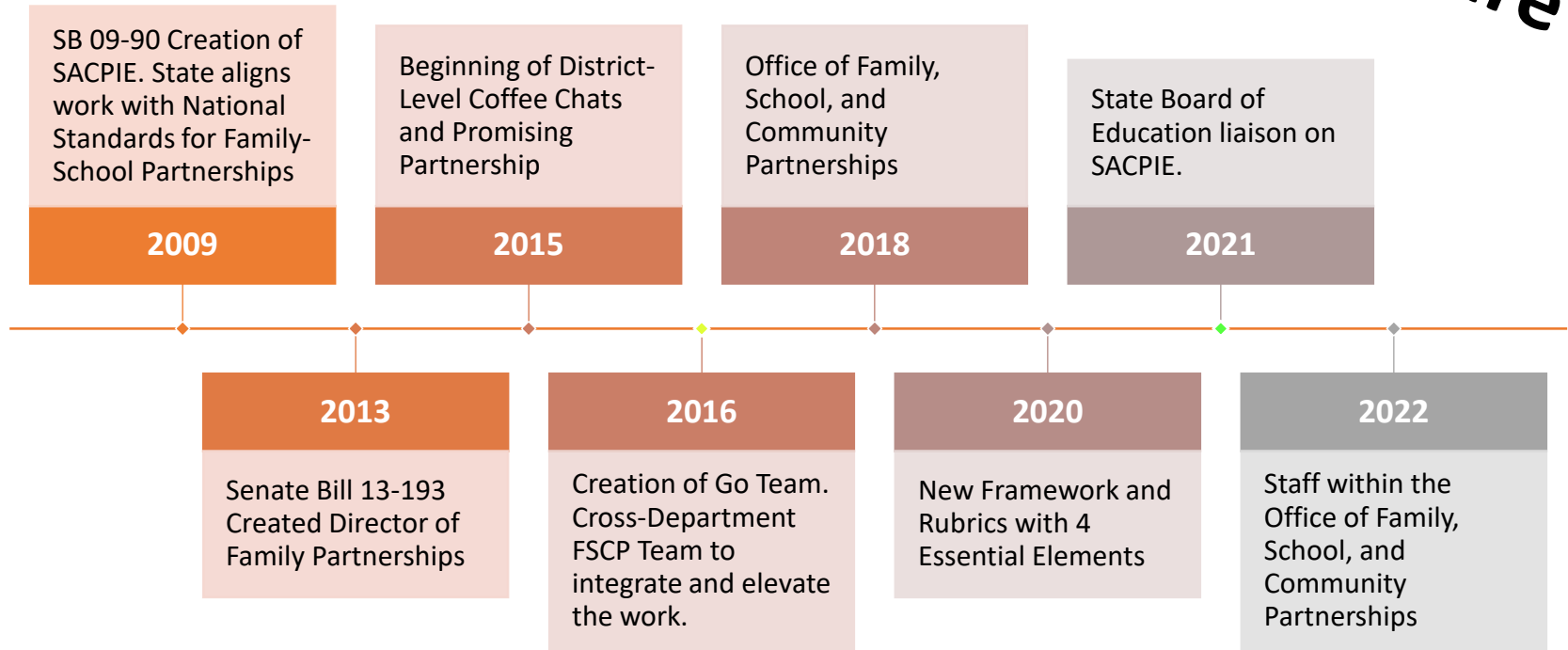
**Measurable**

**Beyond Random Acts**

**Context vs Content Expertise**

# Evolution of FSCP in Colorado

## Systemic Support Structure



# SACPIE's Overarching Goal

To partner with Colorado's families in maximizing the potential of every student by:

Reducing dropout rates.

Reducing gaps in academic achievement and growth among student groups.

Increasing the number of students who continue into higher education.

# SACPIE Includes Members Who Represent...

- Parents on School or District Accountability Committees (one per congressional district)
- Non-Profit Organizations That Promote Families Who:
  - Have Students with Disabilities
  - Are Underserved
  - Need Health and Wellness Support
- Early Childhood
- Statewide Organizations For:
  - Counselors
  - Teachers
  - School Executives
  - School Boards
  - Charter Schools
  - Parents and Teachers
- Colorado State Government Departments
  - Education
  - Higher Education
  - Human Services

# Research Base



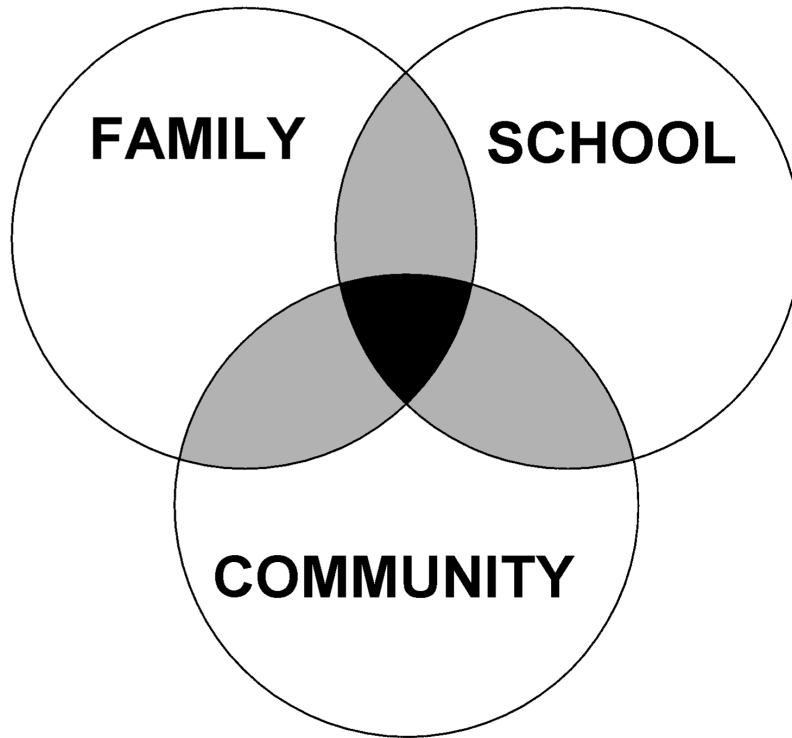
**SACPIE**

State Advisory Council for Parent Involvement in Education





# OVERLAPPING SPHERES OF INFLUENCE



Factors Influencing  
Effective Partnering

Experiences,  
Beliefs,  
Practices



Are you ready for FSCP?

- All parents have dreams for their children and want the best for them.
- All parents have the capacity to support their children's learning.
- Parents and school staff should be equal partners.
- The responsibility for building partnerships between school and home rests primarily with school staff, especially school leaders.

**What do these core beliefs look like in practice?**

**How can you support these beliefs in your district?**

# State and Federal Family, School, and Community Partnership Policy



**SACPIE**

State Advisory Council for Parent Involvement in Education



# FSCP Title I Requirements (Section 1116)

- Title I, Part A parent and family engagement is defined as the participation of parents and families in **regular, two-way, and meaningful communication** involving student academic learning and other school activities, ensuring that—
  - Families play an **integral role** in assisting their child’s learning;
  - Families are **encouraged to be actively involved** in their child’s education at school;
  - Families are **full partners** in their child’s education and are included in **decision-making** and on advisory committees to assist in the education of their child; and
  - Other activities are carried out, such as those described in ESSA Section 1116.



## **Draft**

- ESSA Section 1116(a) and (b) policy is jointly developed with and distributed to families.

## **Implement**

- C.R.S. 22-11-302(g)(II) District Accountability Committee
- C.R.S. 22-11-402 (h)(II) School Accountability Committee

## **Evaluate**

- ESSA Section 1116(a)(2)(D) conduct, with the meaningful involvement of parents and family members, an annual evaluation of the content and effectiveness of the parent and family engagement policy

# Policy Considerations



Policies should be:



Clear



Comprehensive



Flexible



Funded



Facilitated



- **Implementing the Framework of National Standards for Family-School Partnerships**

- Welcoming All Families into the School Community
- Communicating Effectively
- Supporting Student Success
- Speaking Up for Every Child
- Sharing Power
- Collaborating with the Community

- **Sharing Leadership**

- **Action Planning**

- **Evaluating**

# Five Roles Families Play to Accelerate Student Learning



**COMMUNICATE**  
HIGH EXPECTATIONS



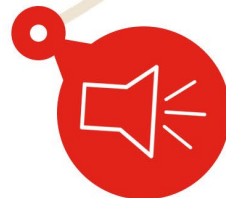
**MONITOR**  
THEIR CHILD'S PERFORMANCE



**SUPPORT**  
LEARNING AT HOME



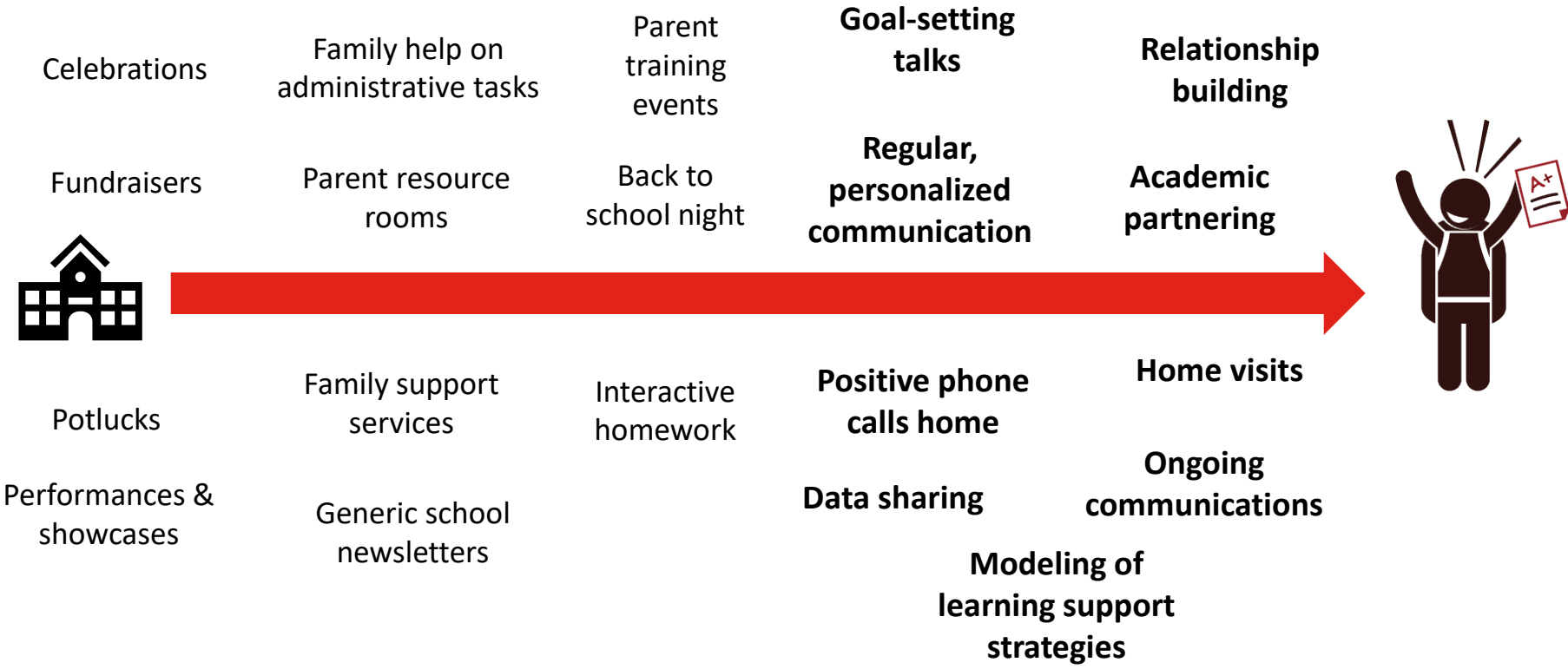
**GUIDE**  
THEIR CHILD'S EDUCATION



**ADVOCATE**  
FOR THEIR CHILD



# CONTINUUM OF IMPACT



# Small Group Discussion

What questions, challenges, or lessons learned can you share about FSCP, particularly when it comes to policy?

What is your role as a school board member in promoting family-school-community partnering (FSCP)?

# Resources

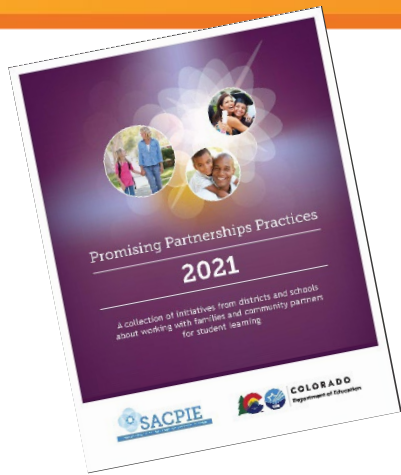


**SACPIE**

State Advisory Council for Parent Involvement in Education



# Supports and Resources from Family-School-Community Partnerships Office



## Reframing Online Academy

Rubric Organization

<b>Essential Element 1 - Create an Inclusive Culture</b> (The school has created an environment that supports the needs, experiences, and capacities of every child, including students with diverse backgrounds and abilities.)
EE1 How are your practices inclusive of all families?
EE1 How are you ensuring direct families' and engagement?
EE1 How is leading and supporting the creation of the welcoming culture?
<b>Essential Element 2 - Build Trusting Relationships</b> (The school creates an ongoing trusting relationship with families and programs actively promote that relationship outcomes for children and youth.)
EE2 What do trusting relationships look like in your program, district, or school?
EE2 How are you ensuring effective use of two-way communication with your families to sustain positive relationships?
EE2 How do you leverage relationships with families to achieve your program/district goals?
<b>Essential Element 3 - Design Capacity Building Opportunities</b> (Schooling provides opportunities for each and every family to actively engage in their child's education and to share in the responsibility for their child's learning.)
EE3 How do you use the content expertise of families to better your content instruction?
EE3 How are you utilizing the assets of your families in your program/school?
EE3 How are you using FICP as a school improvement strategy?
<b>Essential Element 4 - Dedicate Necessary Resources</b> (The school has the resources necessary to promote and sustain meaningful partnerships.)
EE4 How do you implement evidence-based practices to cultivate and sustain FICP?
EE4 Where are you now and where will you go (e.g., evaluation and goal setting)?
EE4 How will you continually improve your family partnerships through community-based resources?

**FSCP**  
A Preschool through 12th Grade Guide for Colorado School Districts

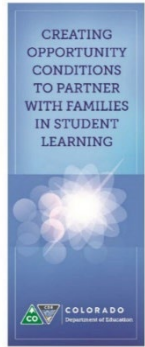
**Family School and Community Partnerships**

**Definition:**  
Partnership is a shared program, activity, and committee activity, partnering to develop, improve, and evaluate effective and equitable practices to improve educational outcomes for children and youth.

The following Essential Elements will help you guide your way.

- Create an Inclusive Culture**  
Partnership activities have been developed to support students with diverse backgrounds and abilities who are actively and meaningfully engaged in their learning. All students are supported and encouraged to participate in all activities.
- Build Trusting Relationships**  
Partnership activities are designed to build trust and support the creation of a welcoming culture. All students are supported and encouraged to participate in all activities.
- Design Capacity Building Opportunities**  
Partnership activities are designed to build trust and support the creation of a welcoming culture. All students are supported and encouraged to participate in all activities.
- Dedicate Necessary Resources**  
Partnership activities are designed to build trust and support the creation of a welcoming culture. All students are supported and encouraged to participate in all activities.

## SAC/DAC Resources



## TIPS Interactive Homework



State Advisory Council for Parent Involvement in Education



# Q&A

Stacey Zis  
CASB Board Member  
Former BVSD School Board  
Former SACPIE CASB Representative  
[staceyzis23@gmail.com](mailto:staceyzis23@gmail.com)



Darcy Hutchins  
Director  
Office of FSCP, CDE  
[hutchins\\_d@cde.state.co.us](mailto:hutchins_d@cde.state.co.us)